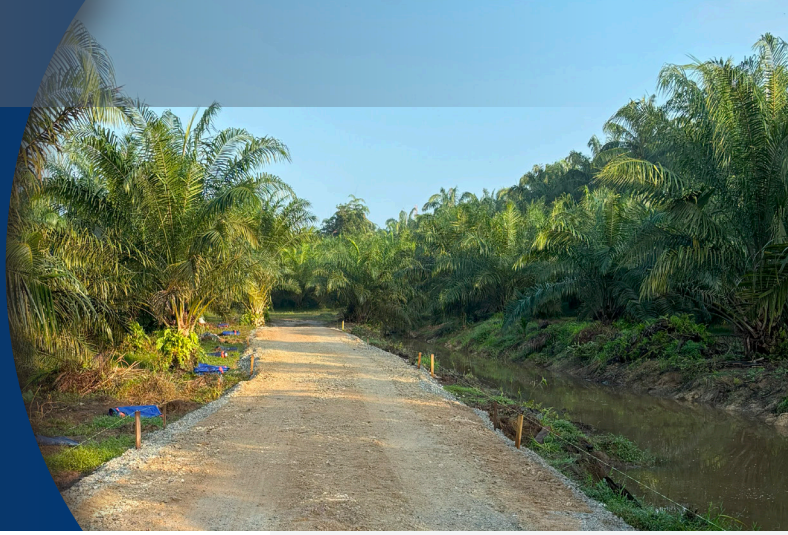


Mechanically stabilised layer makes plantation access road last longer



Riverview Estate Access Road

Kampung Titi Ijok, Perak, Malaysia

CLIENT'S CHALLENGE

The palm oil estate's access roads faced recurring failures due to soft ground, making it difficult for trucks to transport harvested crops. As the only access to the plantation, the crop transportation needed to be halted during each repair cycle and the site remoteness further reduced the rehabilitation work speed. The client needed a solution to help increase the operation efficiency.

TENSAR SOLUTION

A performance trial was carried out comparing the non-stabilised section with a section consisting of a mechanically stabilised layer (MSL) incorporating a Tensar InterAx geogrid. This innovative solution stabilised the granular fill and improved the bearing capacity, allowing trucks to access without immediate failure when compared to the original solution. Both sections were constructed with the same granular thickness and under the same traffic conditions to observe the road performance. In the results, the trial demonstrated the benefit of including a Tensar MSL and the resulting new road construction protected the subgrade soils from excessive damage, reduced the maintenance requirements of the road and enabled uninterrupted truck access during harvesting operations. The client was satisfied with the Tensar MSL performance and applied it to other estate access roads.

Tensar®

A Division of CMC

PROJECT DETAILS

Constructed in
February 2024

Client
Riverview Estates Berhad

Product
Tensar InterAx Geogrid



The picture of the access roads to the oil palm plantation showing failures due to soft ground

Road, Pavement, & Trafficked Areas |
No. 508

B E N E F I T S

- **Improved Road Durability** Tensar InterAx geogrid prevented road failures
- **Environmental Impact** new road reduced maintenance needs
- **Enhanced Performance** enabled continuous truck access during harvesting

let us help you with your next challenge: tensarinternational.com email: tensarinfo-my@cmc.com



We're CMC. You'll find our products strengthening and reinforcing the infrastructure nearly everywhere on the planet in sports stadiums and public buildings as well as highways, bridges, railways and other structures. To serve this global market, CMC maintains facilities across the United States, Europe and Asia. These sites include everything from local recycling centers, steel mini-mills and micro-mills to large-scale fabrication centers, heat-treating facilities as well as other operations. cmc.com ©CMC 2024